

WHAT'S NEXT *for* COMMUNITY PHILANTHROPY

MONITOR INSTITUTE A part of Deloitte Consulting LLP

The world is changing rapidly. How can you help the grantmakers that you serve to adapt?

In today's shifting global, community, and philanthropic context, community philanthropy leaders need to ask: Are the systems and practices they are using *today* the right ones for serving their community *in the future*?

The What's Next for Community Philanthropy toolkit features a dozen interconnected essays, exercises, and games that help community philanthropy organizations of all kinds understand emerging trends, open up to new possibilities, and innovate new approaches and practices for serving their communities.

You can help funders in your region begin to consider these ideas by sharing the free resources available online at monitorinstitute.com/communityphilanthropy.

The *What's Next* toolkit can help organizations in your network...

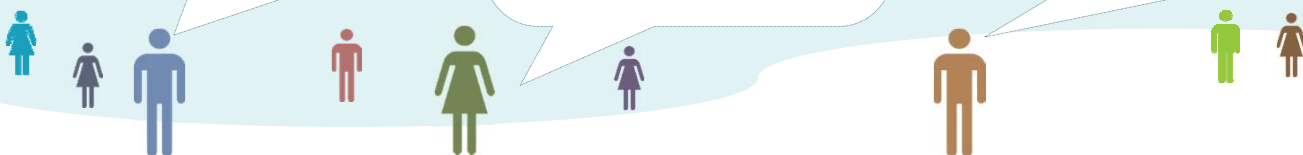
Prepare for the future. Use a series of accessible, one-page briefs to educate their boards about big global trends that may be transforming their communities.

Get unstuck. Play an interactive card game to help them challenge and flip old assumptions about how work is done at their organizations.

Design new services. Participate in structured "ideation" and "prototyping" workshops to build-out new ideas for services and programs to help their communities.

Think strategically. Incorporate an interactive card game into their next planning process to help prioritize the roles that are core, aspirational, and out-of-bounds for their organizations.

Find inspiration. Expose their boards and staff to exciting "bright spots" inside and outside the field, to open them up to new ways of serving their communities.



How can the *What's Next* toolkit serve the needs of grantmakers in your region?

Scores of community philanthropy organizations have already used the toolkit as a way to think strategically about the future, find inspiration, and simply get *unstuck* by challenging old assumptions.

"The *What's Next for Community Philanthropy* toolkit helps community foundations understand where they are and where they should head in the future. We introduced the tools to our members and it kicked off a set of great, but sometimes uncomfortable, conversations about the changing context for their work that we think will be necessary to help their organizations take an important leap forward."

Svetlana Pushkareva Hutfles

Kansas Association of Community Foundations



"Community foundation members continue to ask the Council of Michigan Foundations for more opportunities to use the *What's Next* tools at our annual conferences and retreats. The toolkit can be helpful to foundations across the spectrum, from those still making sense of all the changes in the field and world around them to those already deeply engaged in adapting and changing.

Debra McKeon

Council of Michigan Foundations



"The *What's Next for Community Philanthropy* toolkit should contain a disclaimer: 'Open this toolkit at your own peril, because your life and your organization will be forever changed.' In a rapidly changing world, it truly equips community foundations to break out of their status quo. I've now used the toolkit with a number of foundations in Ohio and it pushes people's thinking in amazing ways. This is powerful work."

Suzanne Allen

Philanthropy Ohio



There are a number of different ways that regional associations can help bring the *What's Next for Community Philanthropy* tools to community foundations and other place-based funders in your areas:

- Share the *What's Next* tools with members through your newsletter, listserv, conference calls, or other regular communications. Descriptions of various lengths targeted specifically to local funders are already prepared and ready for use.
- Work with the Monitor Institute to host an engaging 1-2 hour speech and interactive workshop at your annual conference or other significant gatherings of members.
- Attend or send staff members to an upcoming, one-day train-the-trainer workshop that will help regional associations and selected local consultants learn how to use the *What's Next* tools with community philanthropy organization boards and staff in your areas.

If you are interested in any or all of these activities, please contact us at WN4CP@deloitte.com.

About the *What's Next for Community Philanthropy* initiative

What's Next for Community Philanthropy is an 18-month field-wide innovation and design initiative to help community philanthropy organizations adapt to changing times by building on their existing strengths, challenging traditional assumptions, and exploring new roles that they can play in their communities. The initiative was launched in January 2013 by the Monitor Institute, a part of Deloitte Consulting LLP, with support from the Council on Foundations, Charles Stewart Mott Foundation, W.K. Kellogg Foundation, and Community Foundations of Canada, along with 15 leading U.S. community foundations. For more information, visit www.monitorinstitute.com/communityphilanthropy.